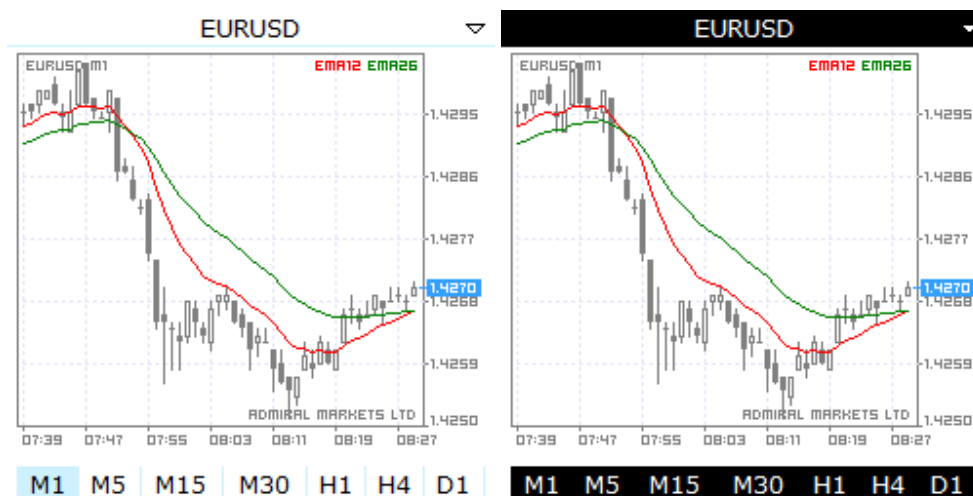


Graph designer user's guide

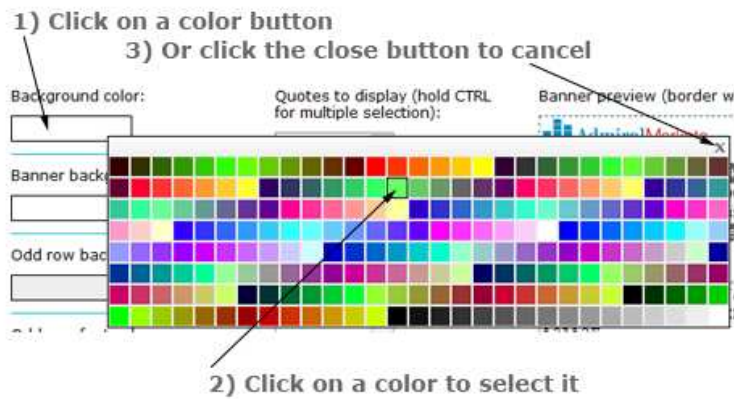
With the help of our graphs informer, your visitors can see graphs of a specified pair of currencies in a specified period of time. The informer (graph) will be auto updated on a selected interval so your visitors will have the latest information without refreshing the page. It works just like a simple banner, except you have to configure it before adding to your webpage. Our graph designer allows you to configure it easily without any knowledge of programming. All you have to do is adapt the design to suit your web interface and add your referral URL. The designer will generate some HTML code that you have to insert to webpage. Note: depending on the page you're using the designer from, its interface may slightly differ, but the base concepts remain the same.

Configuring the way your informers look

Here's a couple examples of graphs you can generate with our designer interface:

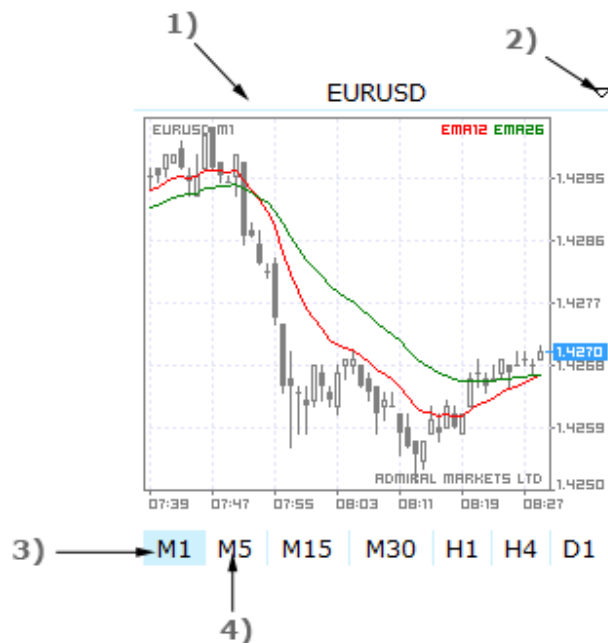


As you can see, the graph background cannot be changed, but you can configure the way the buttons look. On the designer's page you can see some input fields and color buttons. Input fields are used to define some textual or numerical values and the color buttons select colors for various parts of the informer. To select a color for a specific part of the graph, click on the color button. The color picker dialog box will appear under your mouse cursor. You will then be able to click on the color you wish to use:



The picture above is taken from our quotes informer, but it works exactly the same way in graph designer.

Here's a list of all available colors of the graph:



- 1) Button background color. Applies to all the buttons in the informer, except the quotes popup menu. When you click on this button, a popup menu appears and you can change the currency pair.
- 2) Arrow style. You can choose from a few predefined arrow styles to be shown in the rightmost part of the quote selection button.
- 3) Hovered button background color. Applies to all the buttons on the graph (except the quotes popup) when you hover over them with your mouse cursor. The borders between the interval buttons and chosen intervals will also have this color.

4) Same as no. 1.

Besides the background colors, there are also font colors for the same areas of the graph.

Configuring additional settings

Besides the colors you'll also find some input fields you need to fill in or select values from. These fields are:

- Banner height. Defines the height of the banner in pixels.
- Referral URL. Your full referral URL, including the http:// part.
- Refresh interval. This is a data update interval in minutes. The informer will auto-refresh itself in the interval you specify. The minimum interval you can specify is 1 minute.

Finalization

After you've finished the configuration, copy and paste the HTML code from the text box below the banner to your webpage.